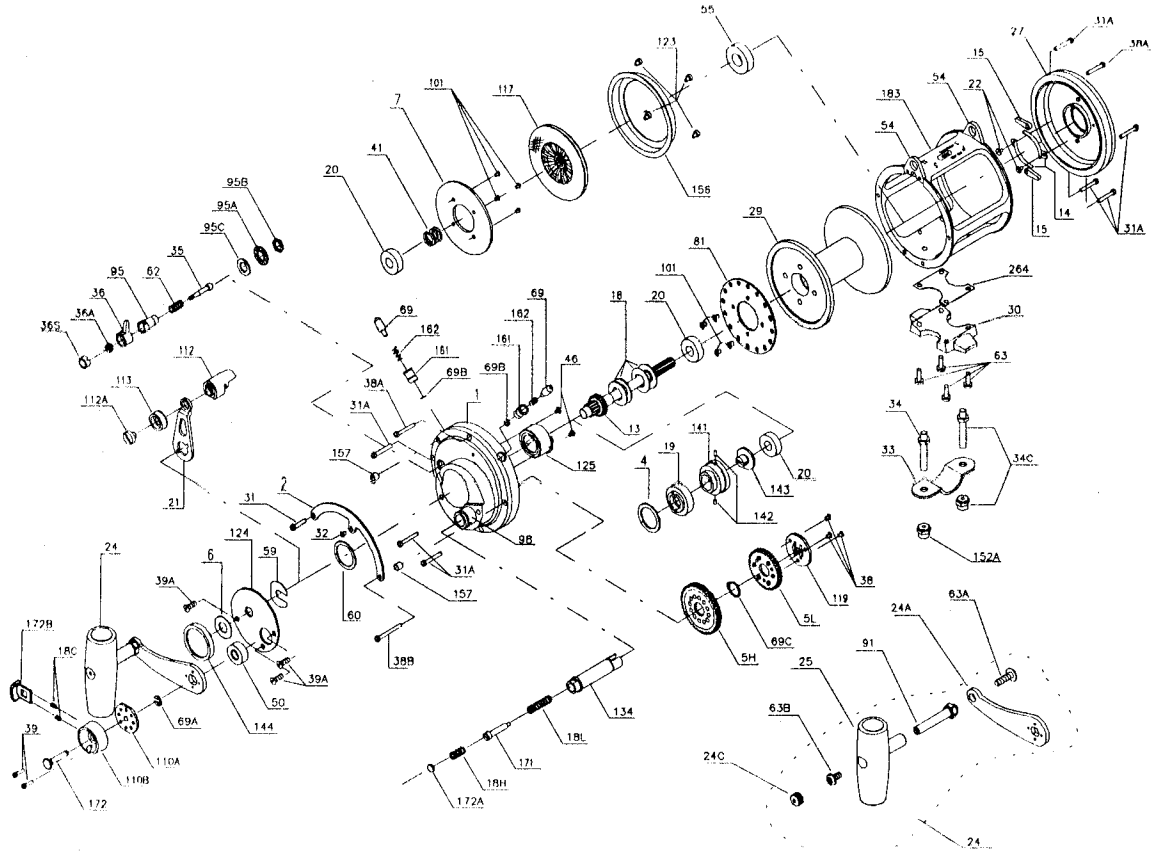




PARTS AND PRICE LIST FOR MODEL 30S



Key No.	Part No.	Description	Price	Key No.	Part No.	Description	Price
1	001 030SN	Right Side Plate Assembly	\$80.00	55	055 080	Ball Bearing	\$16.00
2	002 030	Quadrant Ring	5.65	59	059 050	Slotted Washer	.80
4	004 030	Cam Thrust Washer	.95	60	060 050	Backing Washer	.90
5H	005N030HS	Main Gear (High Speed)	18.25	62	062 050	Click Spring	.80
5L	005 030LS	Main Gear (Low Speed)	18.50	63	063 030T	Stand Screw (4 req.)	.80
6	006 155	Spacer Washer	.60	63A	063A050	Long Screw	1.25
7	007 030	Metal Drag Washer	7.75	63B	063 050	Screw	.75
13	013 030S	Pinion Gear	26.00	69	069 050	Locating Pin (2 req.)	1.20
14	014 050	Dog Spring (2 req.)	1.00	69A	069B030S	Retaining Ring	.80
15	015 050	Dog	.80	69B	069B050	Retaining Ring (2 req.)	.80
18	018 030	Disc Clutch Spring (4 req.)	.85	69C	069C030S	Retaining Ring	1.20
18C	018C015KG	Shift Button Spring (2 req.)	.60	81	081 050	Ratchet	5.15
18H	018H015KG	Shift Spring (Heavy)	.60	91	091N050	Handle Rivet	2.50
18L	018L015KG	Shift Spring (Light)	.75	95	095 050	Click Tongue Bushing	2.05
19	019 030W	Eccentric Cam	12.50	95A	095A020	Click Bushing Washer	.65
20	020 704	Ball Bearing	14.00	95B	038 710	Click Tongue Bushing	.50
21	021 030S	Eccentric Lever	6.00	95C	095A050	Click Bushing Washer	.65
22	022 109	Dog Spring Screw (2 req.)	.55	98	098 030SN	Bridge Bushing	5.10
24	024 030S	Handle Complete	15.95	101	101 030	Drive Plate Screw (8 req.)	.45
24A	024 030S-1	Handle Blank	6.40	110A	110A015KG	Handle Locking Plate	2.10
24C	024C050	Handle Knob Cap	1.25	110B	110B015KG	Handle Lock Cover	2.25
25	025 050	Handle Knob	6.00	112	112 050	Eccentric Lever Knob	16.25
27	027 030T	Left Side Plate-Assembly	60.00	112A	112A050	Eccentric Knob Screw	.90
29	029L030T	Spool	67.00	113	113 050	Eccentric Lever Cap	3.95
30	030 020T	Stand	18.70	117	117D030	Drive Plate w/ Drag Washer	15.00
31	031T020	Short Quadrant Screw	.55	119	119 015KG	Coupling Plate	2.35
31A	031 080	Frame Screw (7 req.)	.60	123	123 050	Drag Cover Screw (4 req.)	.45
32	032 014CH	Center Quadrant Screw	.40	124	124 030S	Bridge Cover	5.90
33	033 990	Rod Clamp	3.95	125	125 030S	Eccentric Cam Housing	7.50
34	034 050T	Clamp Screw (2 req.)	2.05	134	134 030S	Gear Stud	7.50
34C	034C050T	Rod Clamp Screw w/Nut	3.40	141	141 030	Cam Follower	5.65
35	035 050N	Click Tongue	3.10	142	142 050	Cam Follower Pin (2 req.)	.60
36	036 050	Click Button	7.00	143	143 030	Adjusting Screw	4.00
36A	036 700	Click Button Nut	.90	144	144 050	Preset Knob	6.95
36S	036S080ST	Click Button Cap	.40	152A	152A050T	Rod Clamp Nut (2 req.)	1.35
38	101 050S	Coupling Plate Screw (3 req.)	.45	156	156 030T	Drag Cover	5.05
38A	038T050	Frame Screw (2 req.)	.55	157	157 050	Quadrant Spacing Bushing (2 req.)	.60
38B	038T080	Long Quadrant Screw	.50	161	161 050	Locating Pin Bushing (2 req.)	1.20
39	039 001	Shift Housing Screw (2 req.)	.40	162	162 050	Locating Pin Spring (2 req.)	.50
39A	039A080S	Cover Screw	.45	171	171 015KG	Plunger	2.75
41	041 050	L.S. Bearing Spring	.90	172	172 015KG	Shift Button	2.00
46	046A704	Cam Housing Screw (2 req.)	.45	172A	172A015KG	Spring Spacer	.55
50	050N030S	Shield	2.10	172B	172B015KG	Shift Release Button	6.00
54	054 030T	Harness Lug (2 req.)	2.45	183	183 030S	Tube Frame	90.00
				264	264 030T	Stand Gasket	1.60